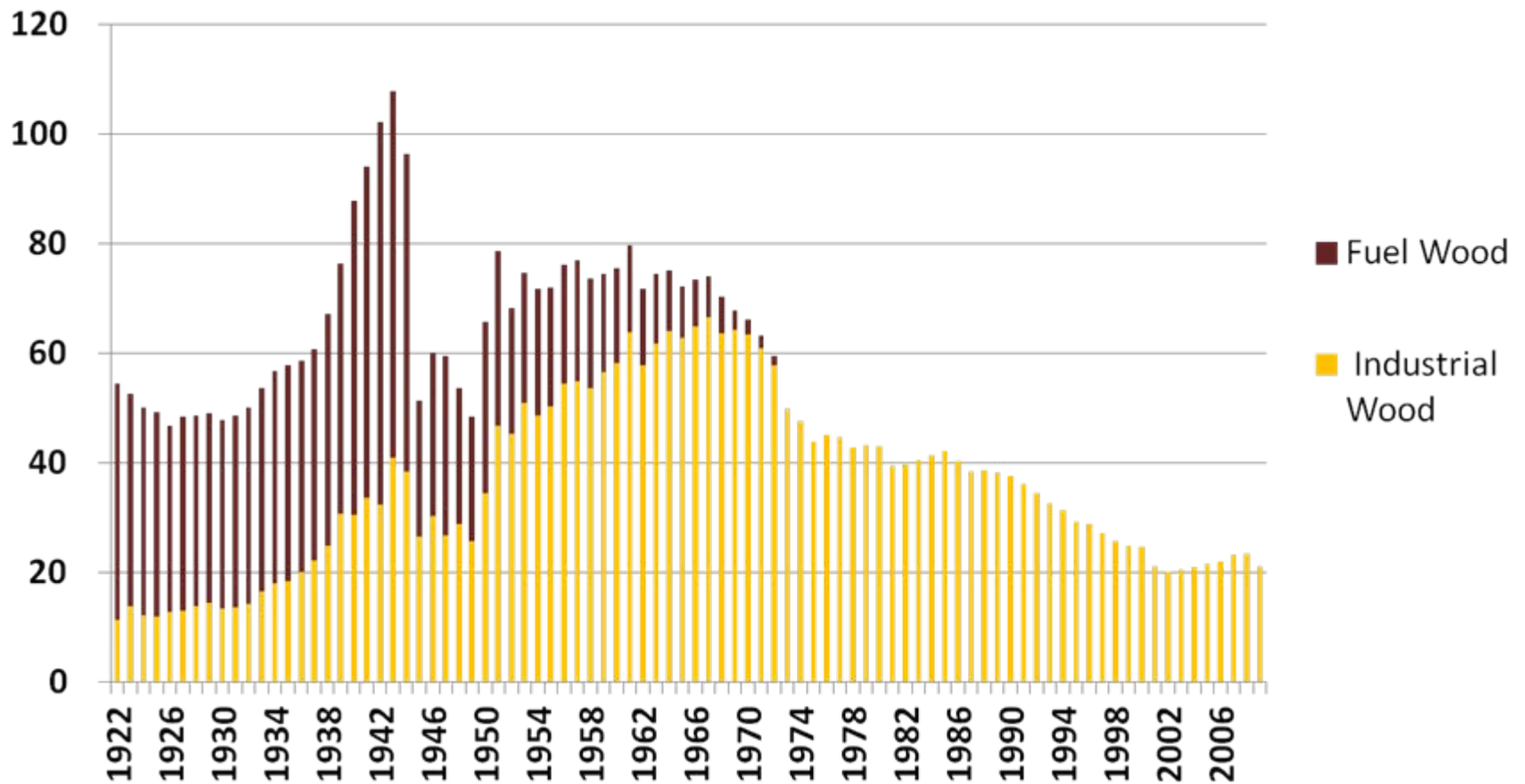


Annual timber removal from Japan's forests (1922-2009)

million m³



Source: Statistical Yearbook of Forest & Forestry, Forestry Agency

Supply of solid woody biomass for energy use Austria, Germany and Japan in 2007-08

	Forest Area		Annual Timber Growth Mm ³ /y	Annual Timber Removal Mm ³ /y	Supply of Solid Woody Biomass Mm ³ /y	% in Total Primary Energy Supply
	Total M ha	per capita ha				
Austria	3.9	(0.46)	31	20-25	17	10.0
Germany	11.1	(0.13)	120	70-80	36	3.0
Japan. Current	24.9	(0.19)	170	20-25	10	0.3
Possibility	24.9		170	(100)	(50-60)	(2.0)

Note 1) Solid woody biomass mainly consists of fuel wood, wood chip and pellets, excluding black liquor.

2) Assumption in “Japan. Possibility” is that 60% of annual growth be utilized.