

自然エネルギー財団

RENEWABLE ENERGY INSTITUTE

# Tomas Kåberger

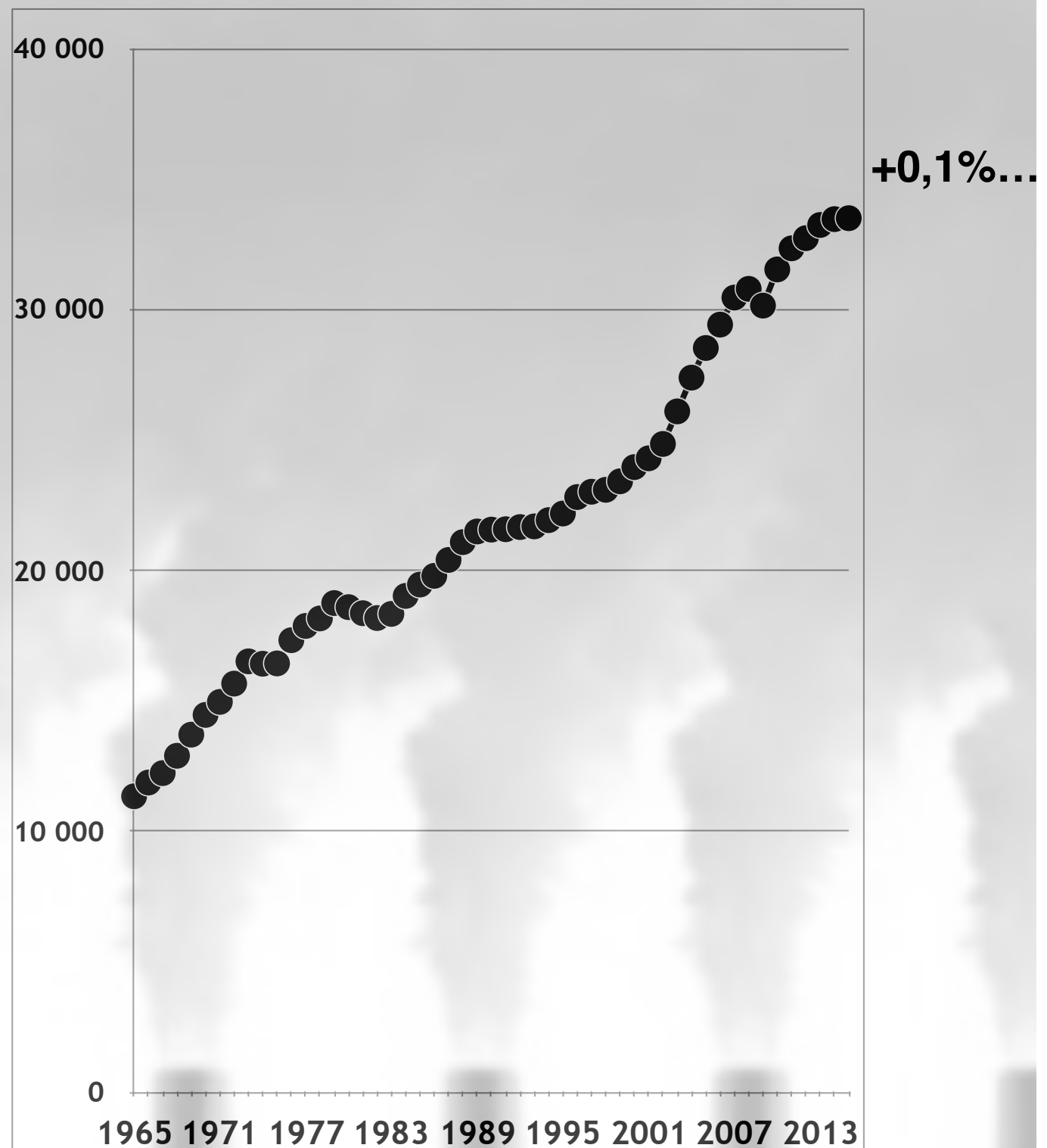
Executive Board Chairman Renewable Energy Institute  
Professor, Co-director Energy Area of Advance Chalmers University of Technology



自然エネルギー財団  
RENEWABLE ENERGY INSTITUTE

Mton

# Global carbon dioxid emissions from fossil fuels 1965-2015



Data from BP Statistical review 2016

# CO2- emission leading regions 1965- 2015

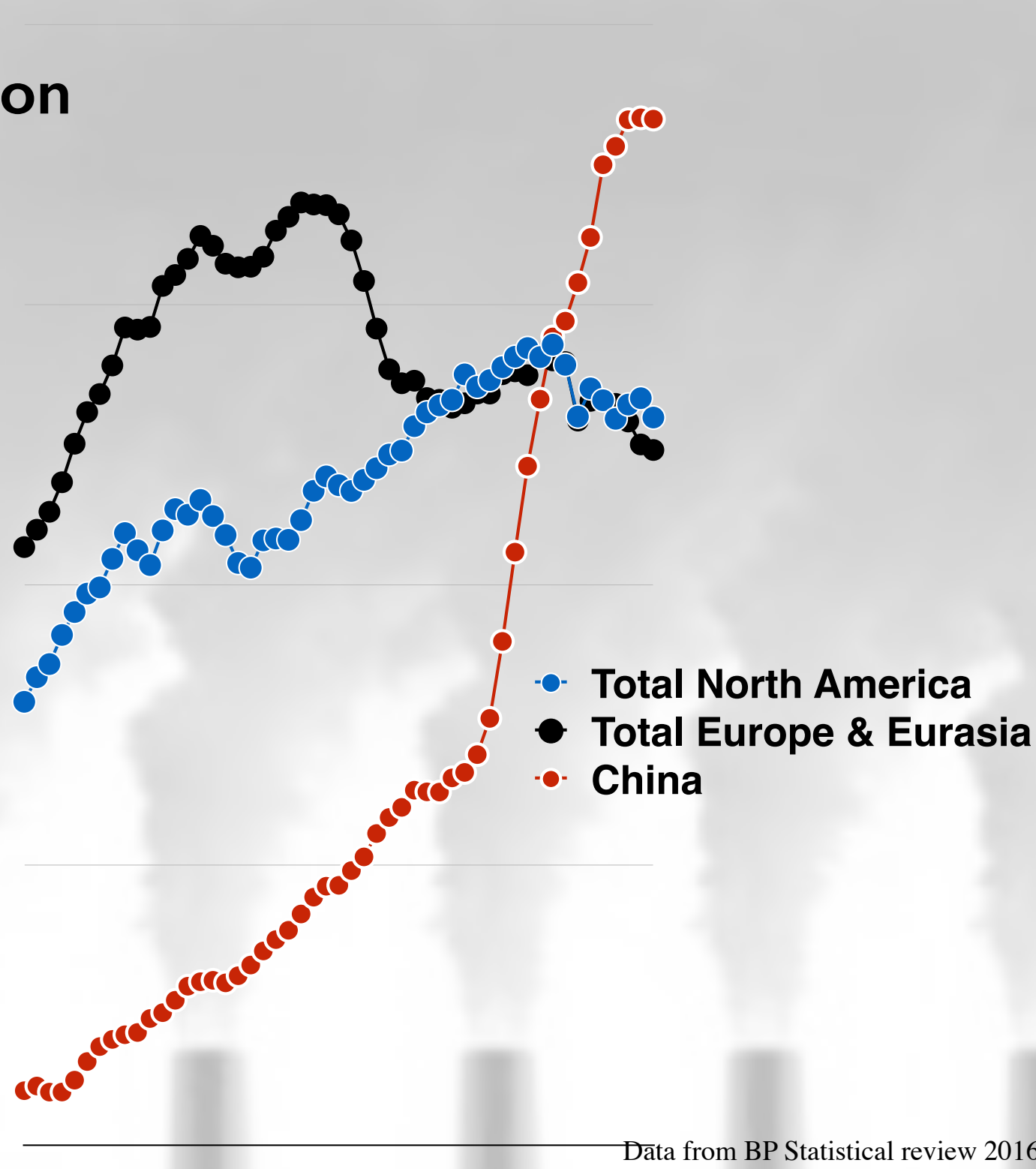
10 000  
Mton

7 500

5 000

2 500

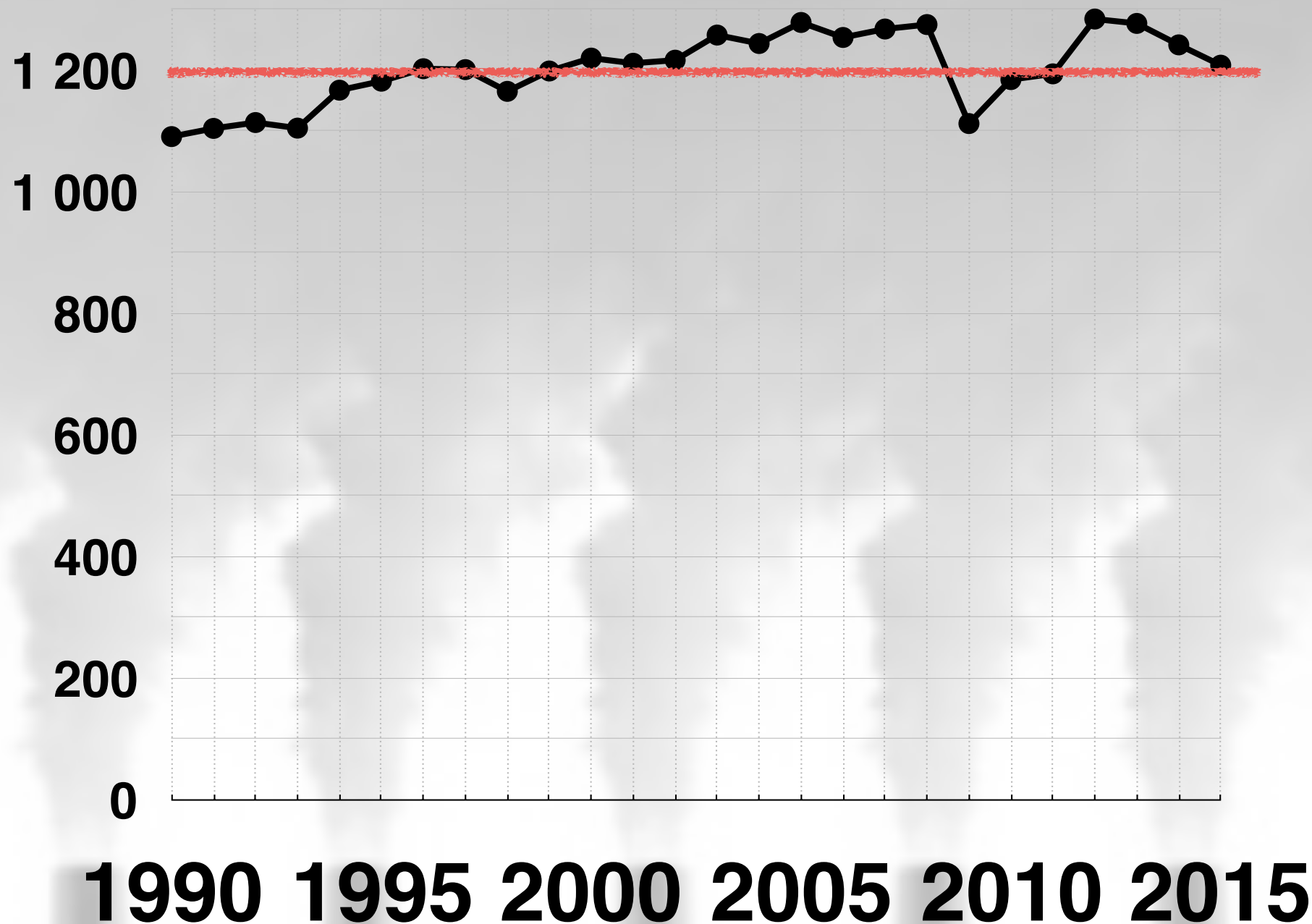
0





自然エネルギー財団  
RENEWABLE ENERGY INSTITUTE

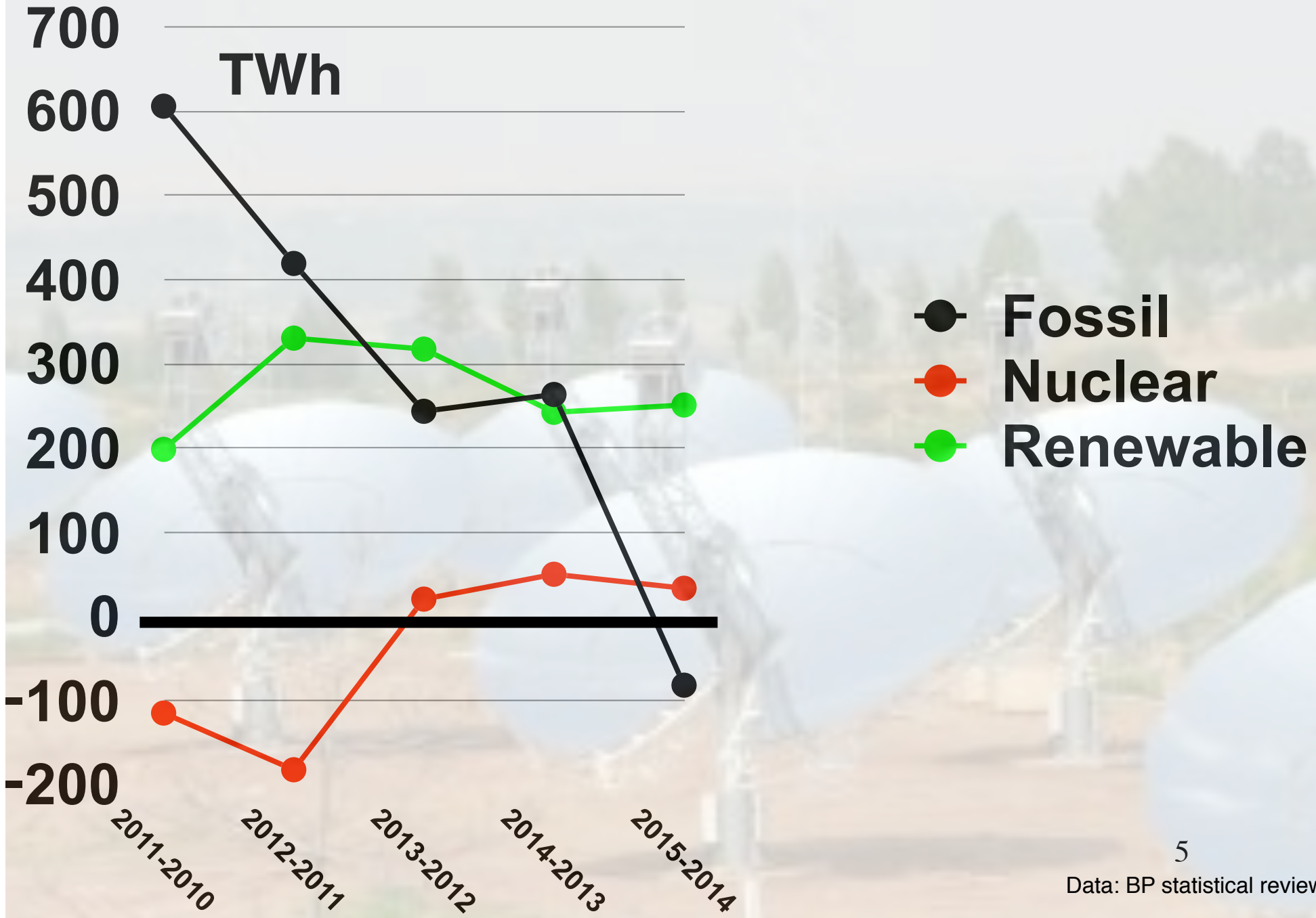
# Japan, Mton CO<sub>2</sub>-emissions



Data from BP Statistical Review of World Energy 2016



# Global, annual change of electricity generation 2010-2015

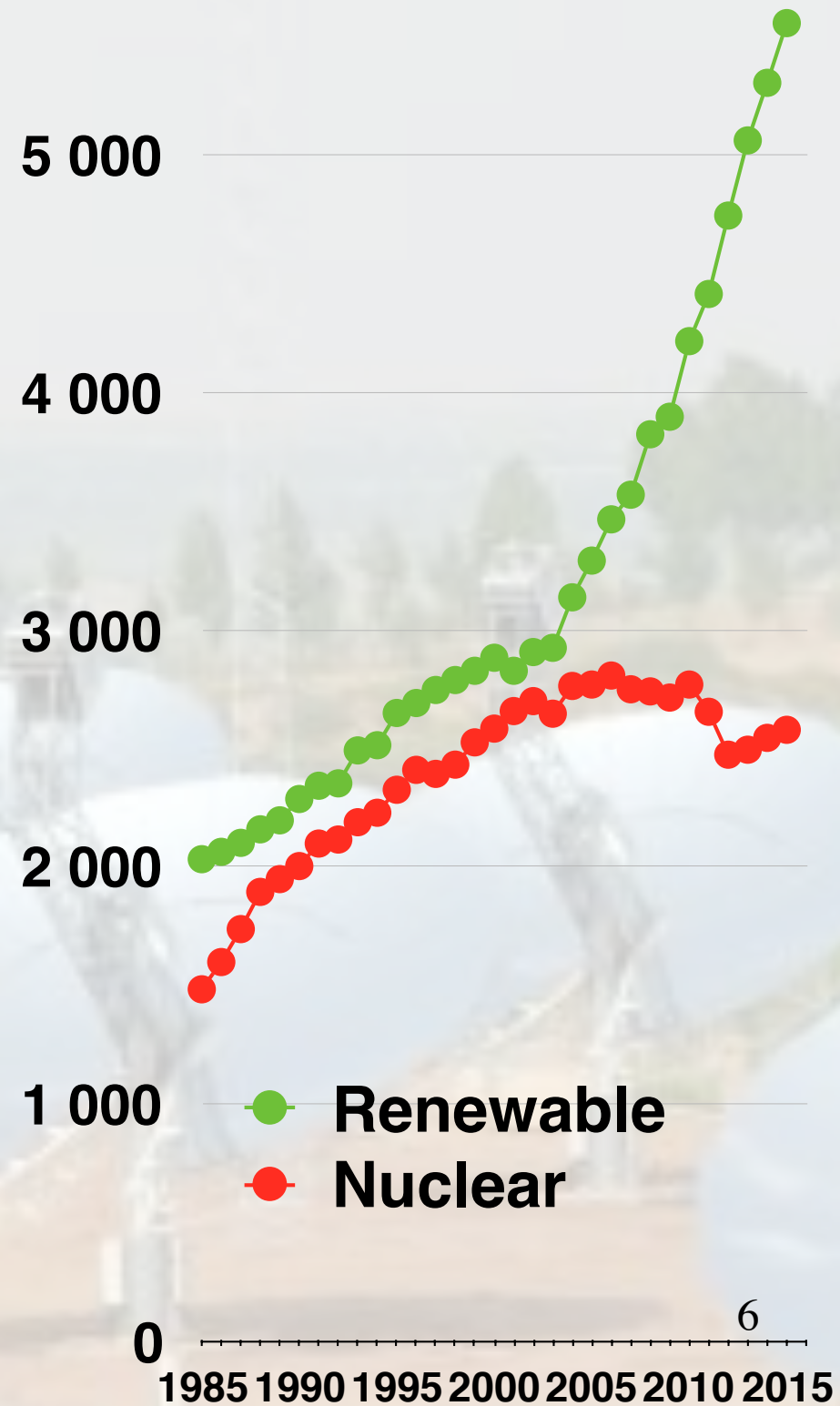




自然エネルギー財団  
RENEWABLE ENERGY INSTITUTE

TWh

# Non-fossil electricity generation globally, 1965-2015



Data: BP  
Statistical Review  
2016





500

# Solar electricity kWh/capita 1990-2015

400

300

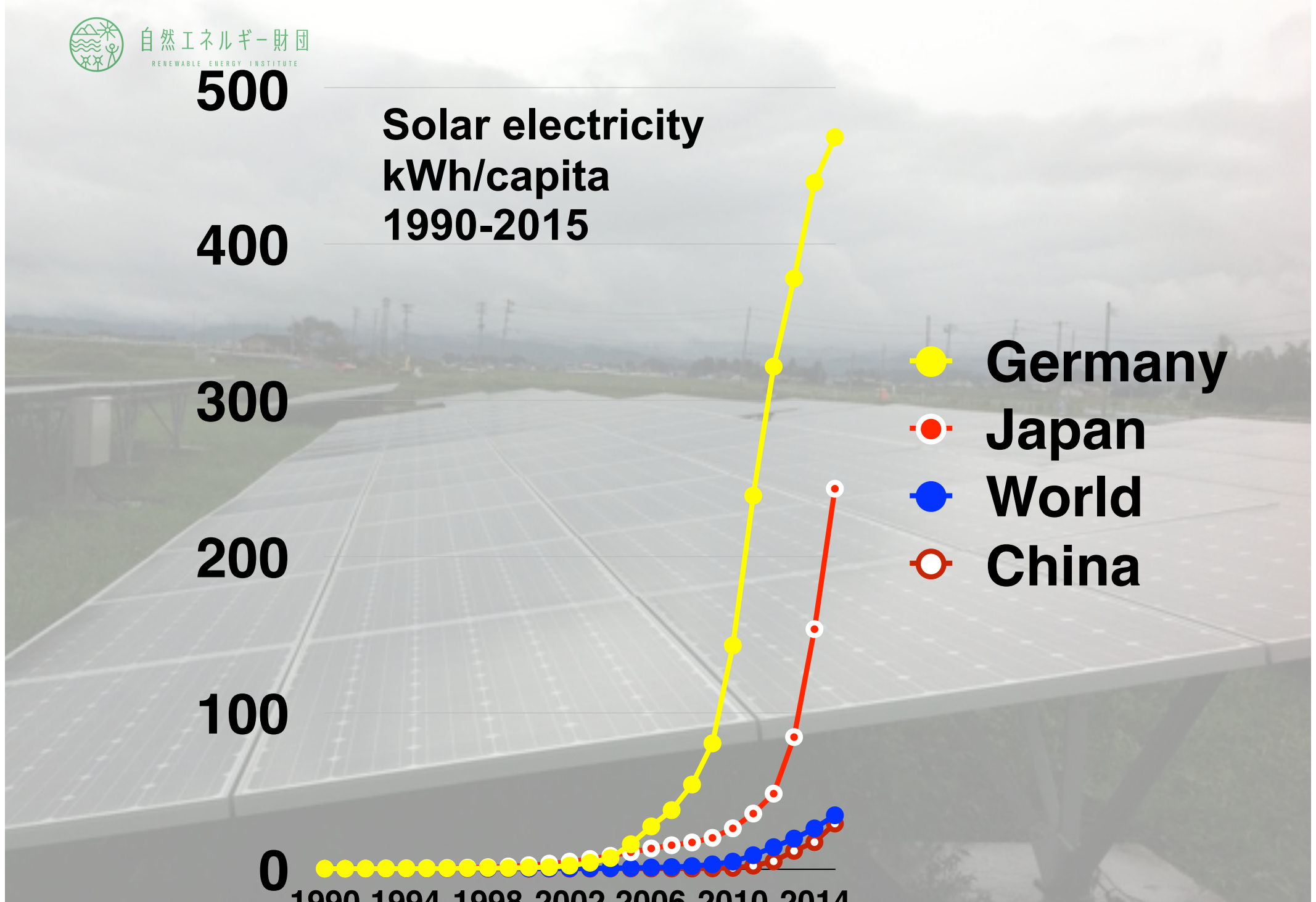
200

100

0

- Germany
- Japan
- World
- China

1990 1994 1998 2002 2006 2010 2014



# Japan, share of renewable power

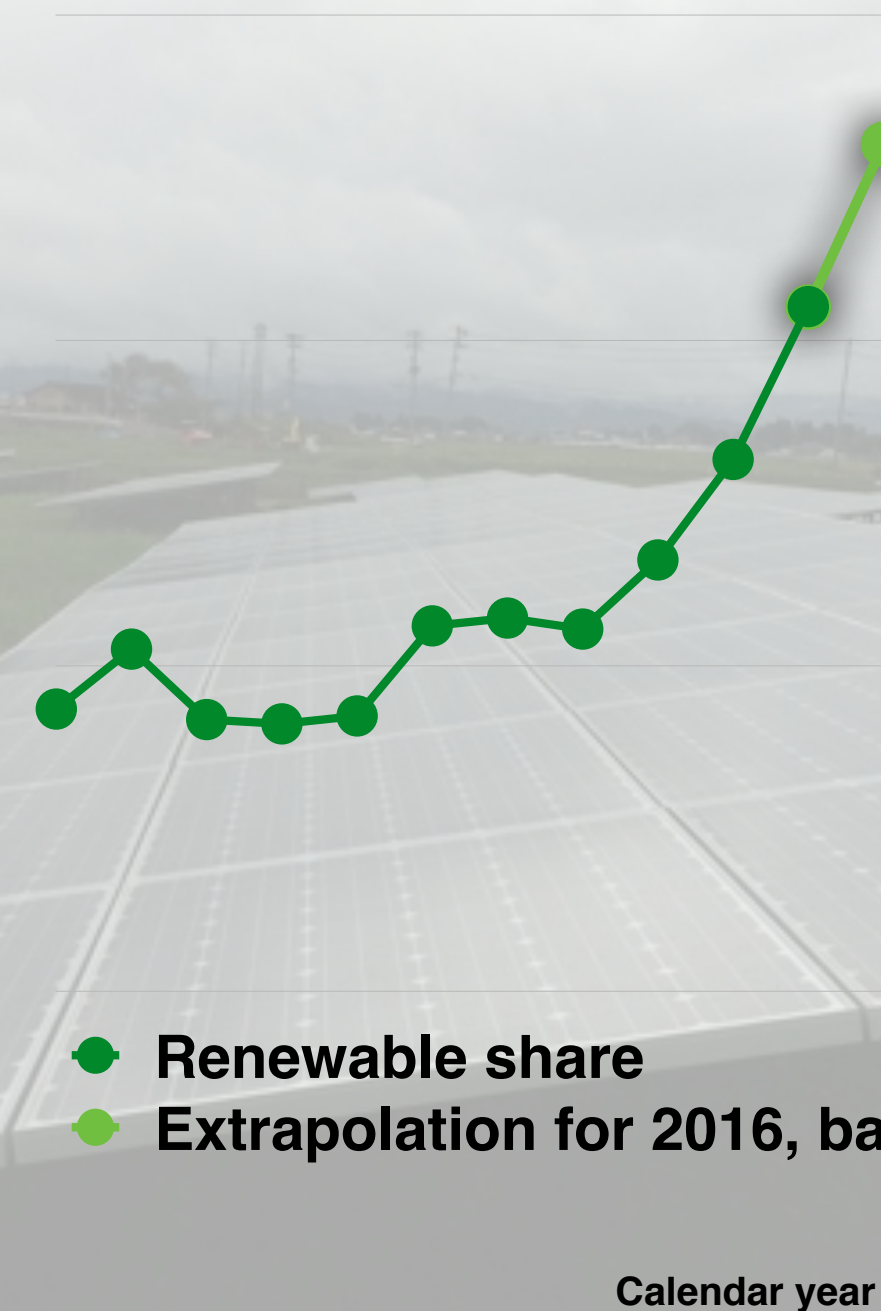
20 %

15 %

10 %

5 %

0 %



*-Reaching 22-24% will not need another 14 years*

- Renewable share
- Extrapolation for 2016, based on Jan-Apr

Calendar year

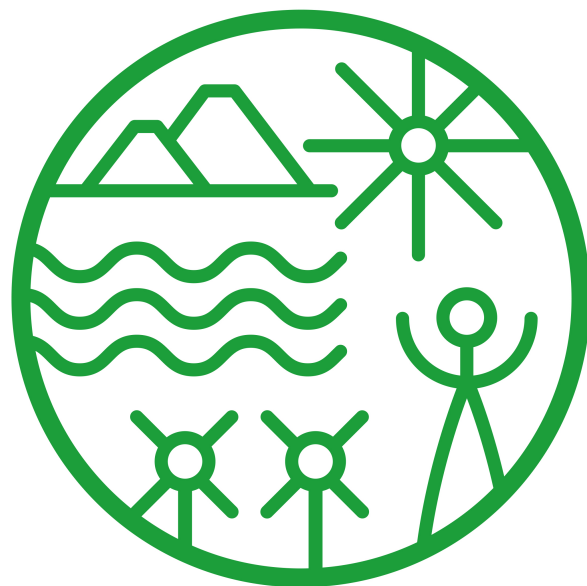
2005 2007 2009 2011 2013 2015



***Let us celebrate progress!***

—

***and continue to make Japan energy-rich***



自然エネルギー財団

RENEWABLE ENERGY INSTITUTE